



SERVICE AND WARRANTY

**There is NO SERVISABLE PARTS INSIDE.
PLEASE DO NOT ATTEMPT TO REPAIR IT.**

Return it for servicing to: PSA Products Pty Ltd. 17
Millicent Street, Burwood, Vic 3125, Australia.
Tel: 1300 PSA PRODUCTS (1300 772 776)

**Warning: NO Smoking alarm found tampered
with will void all warranty**

THREE YEAR LIMITED WARRANTY

PSA Products warrants to the original purchaser that this LIF707R NO Smoking alarm (but not the battery) will be free from defects in materials and workmanship or design under normal use and service for a period of three (3) years from the date of purchase. The company will not be obligated to repair or replace parts which are found to be in need of repair, or replace parts because of misuse, damage, or alteration incurred after date of purchase. PSA Products agrees to repair or replace, at its option, any defective NO Smoking alarm provided that it is returned with proof of purchase and return postage prepaid to PSA Products. To the extent permitted by law, the liability of PSA Products arising from the sale of this NO Smoking alarm or under the terms of this limited warranty shall not in any case exceed the cost of a replacement smoke alarm and subject to this clause. In no case shall PSA Products be liable for consequential loss or damages resulting from the failure of this NO Smoking alarm or breach of this, or any other warranty, express or implied, loss or damage caused by failure to abide by the instructions

supplied in this user manual. This warranty is in addition to and does not exclude the rights of consumers under the Australian Trade Practices Act 1974, or any other law which may not be excluded.

Another Quality Product By:

PSA Products Pty Ltd
17 Millicent Street, Burwood, Victoria 3125,
Australia.
Ph: 1300 PSAPRODUCTS (1300 772 776) Fax:
(03) 9888 9993
E-mail: enquiry@psaproducts.com.au
Website: www.psaproducts.com.au

**PSA Products is specialised supplier of Fire,
Security and Intercom products.**

Products range includes:

**LIFESAVER Smoke Alarm and accessories,
PANACOM audio/video intercoms, PINKERTON
security products, CCTV's,
HOMEGUARD Fire Extinguishers and Smoke
Alarms, FyrPro Fire Alarm Panels and
accessories**

LIFESAVER Model LIF707R

'No Smoking' Alarm

This 'No Smoking' alarm IS NOT BE USED for ANY Fire Protection system applications or in general household smoke alarm applications

- **Advanced Photoelectric Technology with 3 Level Sensitivity**
- **9 Volt Alkaline Battery included**
- **Easy interconnect and relay jump lead**
- **SILENCE feature**
- **On Board Relay 1A@30Vdc; 0.5A@125Vac**
Please note: If 240VAC mains operated equipment needs to be controlled by this No Smoking alarm, use a secondary 240VAC rated relay, suitable for your application, driven by the On Board Relay.
Power supply to drive the secondary 240VAC relay is NOT included.

Cable Requirement

Fig 8 / 4 core security cable

Fig 8 Min. 0.75mm²

4 Core security cable Min. 14/0.20 up to 100 meters

Introduction

The LIF707R 'No Smoking' Alarm is a highly-sensitivity alarm based on advanced photoelectric technology. It can sense cigarette, cigar and pipe tobacco smoke at an early stage and warns by means of a buzzer and a red light-emitting diode.

An On-Board relay allows you to monitor remotely and alert you in an event of an alarm.

Product Features

Smoke Sensing

Every NO Smoking alarm can be individually calibrated in order to avoid false alarms.

This NO Smoking alarm is electronically regulated internally, thereby maintaining constant sensitivity of the alarm.

This NO Smoking alarm has 3 levels of sensitivity that you can chose to suit the environment.

1. High sensitivity
2. Normal sensitivity
3. Low sensitivity

Red LED

- (i) When the NO Smoking alarm goes into alarm on detecting smoke, the alarm will sound and the Red LED will flash
- (ii) The Red LED flashes once every 45 seconds to indicate the alarm is functioning correctly (self-testing).
- (iii) The Red LED flashes when the battery power is low and chirp simultaneously. Please replace the battery without delay.
- (iv) The Red LED will flash continuously on SILENCE mode until the smoke is cleared.

Battery Warning

The LIF707R NO Smoking alarm has a low battery monitor circuit which will cause the alarm to beep once the battery runs low and will emit a short beep warning sound. Simultaneously, the red LED will blink once approximately every 45 seconds, signaling the battery is low. The alarm will continue to operate for up to 30 days in this mode. Replace the battery when this condition occurs.

Fully Automatic Test Function

This NO Smoking alarm has advanced engineering design to ensure the best possible operating readiness by means of an automatic self-test function.

In case of failure, the alarm gives out a fault signal by means of 3 beeps approximately every 45 seconds synchronized with the blinking of the LED.

Smoke Detection

When the No Smoking alarm detects smoke, the alarm will emit quick succession beeps and the red LED will flash with the beeps.

Interconnection

The LIF707R NO Smoking alarm can be interconnected to a maximum of 12 units on a single line and wired together. Maximum cable run is 100 meters. When one NO Smoking alarm senses smoke, all the other interconnected units will sound simultaneously. If the NO Smoking alarm is interconnected and when the alarm sound, it will emit 1 beeps per second, continuously. This function will cease once all the smoke is dispersed. In an interconnect alarm activation situation, only the originating No Smoking alarm that initiated the alarm will have the red LED flashing. The remaining smoking alarms remains off when the alarms are sounding.

If the NO Smoking alarm relay is remotely linked it will alert the owner.

Multi-function Button

The multi-function button is located on the alarm cover and performs the following functions;

1. Manual Test

For Manual Testing the NO Smoking alarm press the button for at least one second and the alarm will sound.

2. SILENCE feature

When the NO Smoking alarm is activated, press the button for less than half a second and the audible beep will cease.

The red LED will continue to flash until the smoke is cleared.

If the NO Smoking alarms are interconnected, the originating NO Smoking alarm that caused the alarm red LED will flash until the smoke is cleared. The other interconnected No Smoking alarms red LED will remain OFF. All interconnected NO Smoking alarm will continue to emit 1 beep per second until the silence button is pressed on individual NO Smoking alarm or until smoke is cleared from the originating No Smoking alarm. Pressing the button on the originating No Smoking alarm will silence all interconnected units.

Relay

When in alarm mode, The LIF707R relay will latch on until the smoke is cleared

Recommended Location for Alarms

- The NO Smoking alarm should be mounted on the ceiling in areas selected for No Smoking.
- It is advisable more than one NO Smoking alarm should be installed if you have a large area to protect.
The recommended space between each smoke alarm is 3-4 metres.
- For complex installations please seek qualified assistance from your product supplier.

The following locations should be avoided:

- Next to doors, windows, ventilators etc. where draughts can deviate smoke from the sensor.
- In small or poorly ventilated garages or kitchens where waste gas or vapors may cause false alarms.
- In areas where dust and dirt can interfere with the operation or cause false alarms.
- In areas where insects or vermin may affect the integrity of the alarm.
- In damp or humid areas or near a bathroom. Moisture or steam may cause nuisance alarms.
- In areas where the temperature may often fall below -5°C or exceed $+38^{\circ}\text{C}$.

Adjusting the Relay for NO/NC

The default setting of the relay output is "normally open" (NO).

1. To adjust the default setting of the relay to "normally closed" (NC) **unscrew the 2 screws located on the base.**
2. There is a jumper head (marked J3) next to the relay on the PCB. Remove the jumper head and re-insert it in the NC position.
3. **Please CAREFULLY place the body section by aligning the spring inside the round slot.**
4. **Secure the parts with the 2 screws.**

Relay contact rating:

1A@30VDC, 0.5A@125VAC

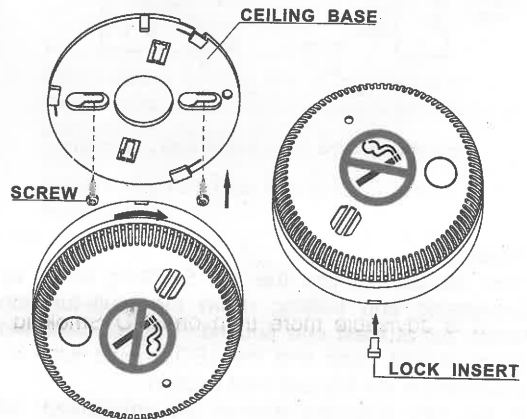


Fig.1 Installation

Installation

- Drill two horizontal holes 5 diameter, 22mm deep, 58 mm apart, where it is intended to install the alarm.
- Insert the enclosed plastic plugs into the holes.
- Separate the base plate and alarm by rotating the base plate anti-clockwise.
- Place the base plate so that the two long slot-holes are aligned to the plastic plugs inside the ceiling. Fasten the base plate on the respective surface using the screws and plugs supplied.
- Open the battery lid of the detector, Clip the battery lead to the 9V Alkaline battery, ensuring the correct polarity, and then insert the battery in the space

provided. Then close the battery lid. A screw is provided for you to secure the lid.

- Align the alarm onto the mounting bracket perfectly and turn it clockwise to firmly lock it.
- On the base plate, there are 2 tamper proof inserts to tamper proof the NO Smoking alarm.

Relay and Interconnection Wiring

Figure 2 shows the wiring of the Remote Indicator/Relay and/or interconnection.

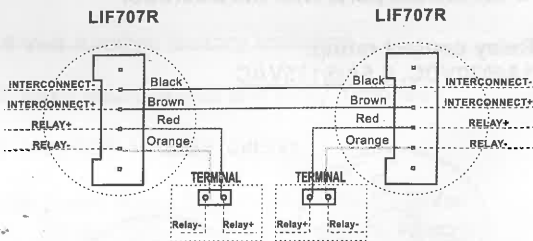


Fig.2 Wiring of the Relay and/or interconnection

Testing

After installation, test the NO Smoking alarm by depressing and holding down the multi-function button for at least one second. The NO Smoking alarm should beep and the LED should flash as described in the Manual Test section.

If the NO Smoking alarms are interlinked, all alarms will sound simultaneously.

If the NO Smoking alarm does not beep or the LED does not flash, please check the following points:

- Is the NO Smoking alarm damaged?
- Is the No Smoking alarm clean?
- Is the battery working properly? Are you using the recommended battery types? Is the battery connected properly? Replace the battery if necessary.

If the NO Smoking alarm is still not working, do not attempt to repair it but contact your supplier for advice.

There is NO SERVISABLE PARTS INSIDE

We recommend you to test the NO Smoking alarm at least once a week.

You can use the LIFESAVER LT711 Smoke Detector tester to safely test the NO Smoking alarm

False alarms

This NO Smoking alarm should not give you any false alarm in normal condition and if no smoke is detected. However if the false alarm occurs frequently please contact your supplier for advice.

Maintenance

Periodic maintenance contributes to a long service life of the LIF707R smoke alarm and ensures failure free operation.

- Clean the outside cover with a damp cloth at least every three months (do not use any detergent).
- Vacuum the outside cover and vents every three months. Never let the vacuum cleaner come in contact with the interior parts of the smoke alarm.

Important!

The LIF707R NO Smoking alarm requires sufficient power to operate.

- Please use only the following 9 volt batteries for replacement. These batteries can be purchased from your local retailer.

Lithium Type:

Ultralife U9VL-J (we recommend Lithium battery)

Alkaline Type: Energizer 522
Duracell MN1604 or MX1604
Gold Peak 1604A

- Please check the polarity of the battery carefully.
- Please verify that the NO Smoking alarm is working properly immediately after replacing the battery.
- When the low battery warning signal sounds, replace the 9 volt battery immediately.
- A fresh battery should last for at least one year under normal operating conditions.
- The LIF707R NO Smoking alarm is designed for ceiling mounting only.

General

The LIF707R NO Smoking alarm will activate the warning beep when it detects cigarette, cigar or pipe smoke. Anything obstructing smoke from reaching the NO Smoking alarms will delay emitting an early warning. A single NO Smoking alarm provides only limited coverage and you should consult the supplier if a large area of detection is desired.